



Bellerophon

Gemlab

Gem Report N^o R-201917569



Image is approximate in size

Weight : 1.302 ct

Dimensions : 6.88 x 5.65 x 3.94 mm

Identification : Natural Sapphire

Color : Deep Blue

Comments : The gemological properties confirm the authenticity of this gemstone. (see reverse for data)

No Indication of heat treatment



Laboratory Analysis Bellerophon

26-Aug-19




The conclusions on this report refer only to the article(s) described and were obtained using the techniques and equipment at the time of examination. A gemstones could be modified and/or enhanced at any time. Bellerophon can at any time reassess if a item is in accordance with the report.

Verification : to ensure authentication of the present report go to www.gemlabanalysis.com/verification
Digital content available such as **360 video & 3D scan**

Terms & Conditions go to www.gemlabanalysis.com/terms-conditions,
further information about process and nomenclature visit our website

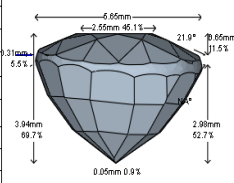
 M.P.H Curti, GG

 T. Rozet, ATC

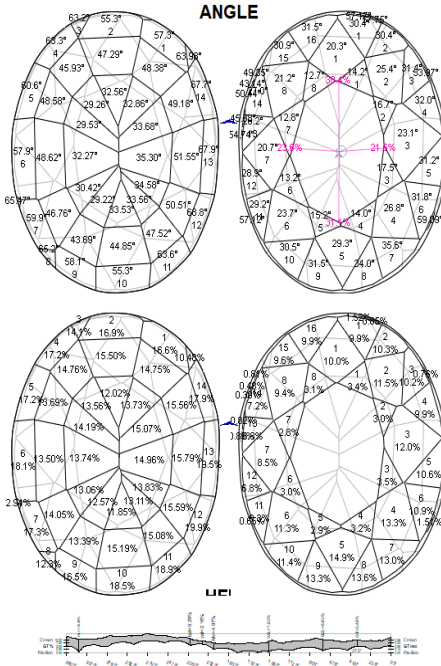
The data collected on your item is valid at the issuance date of this report

Cut Analysis

Length: 6.88 mm	Width: 5.65 mm	L/W: 1.22
Total Depth: 3.94 mm	69.7%	
Pavilion Depth: 2.98 mm	52.7%	
Pavilion Angle: NA		
Crown Height: 0.65 mm	11.5%	
Crown Angle: 21.9		
Table Size: 2.55 mm	45.1%	
Girdle: 0.28 mm	5.0%	
Culet Off Center: 1.6% (W:1.4%, L:0.7%)		
Table Off Center: 0.07 mm		



Angle	Facet #	A	B	C	D	AVG	MIN	MAX	DEV
Cm Bezel °	1	20.3	29.3	NA	NA	24.8	20.3	29.3	8.9
	2	25.4	26.8	23.7	21.2	24.3	21.2	26.8	5.6
	3	23.1	NA	NA	20.7	21.9	20.7	23.1	2.4
Star °	1	14.2	14.0	15.2	12.7	14.0	12.7	15.2	2.5
	2	16.7	17.5	13.2	12.8	15.1	12.8	17.5	4.7
Pav. Main %	1	NA	NA	NA	NA	NA	NA	NA	NA
	2	NA	NA	NA	NA	NA	NA	NA	NA
	3	NA	NA	NA	NA	NA	NA	NA	NA
Height	Facet #	A	B	C	D	AVG	MIN	MAX	DEV
Cm Bezel %	1	10.0	14.9	NA	NA	12.5	10.0	14.9	4.9
	2	11.5	13.3	11.3	9.4	11.4	9.4	13.3	3.9
	3	12.0	NA	NA	8.5	10.2	8.5	12.0	3.5
Star %	1	3.4	3.2	2.9	3.1	3.1	2.9	3.4	0.6
	2	3.0	3.5	3.0	2.8	3.1	2.8	3.5	0.7
Pav. Main %	1	NA	NA	NA	NA	NA	NA	NA	NA
	2	NA	NA	NA	NA	NA	NA	NA	NA
	3	NA	NA	NA	NA	NA	NA	NA	NA



General Conditions of Analysis by Bellerophon gemlab

I. Method of analysis, restrictions

Bellerophon shall carry out the analysis according to its state-of-the-art methods at the time of order, including quasi non destructive methods such as Laser Ablation (LA & LIBS) testing unless explicitly excluded by the client. Unless client informs Bellerophon that an item submitted has already been tested before, it will be considered a new submission. It is possible that a later re-examination of the gemstone(s) may lead to different results, should the applicable scientific standards for the examination change.

II. Scope of analysis, restrictions

The geographical origin of a gemstone cannot be ascertained, as the opinion is based mainly on comparative analysis of internal features and relevant chemical and physical characteristics. Idem for the detection of gemstone treatments, which are in constant evolution and may be mentioned in the report or not. Bellerophon makes no warranty whatsoever regarding the actual origin of any gemstone(s). Any remarks concerning the presence or absence of any treatment type or method are solely the expression of the findings made by Bellerophon.

III. Warranty

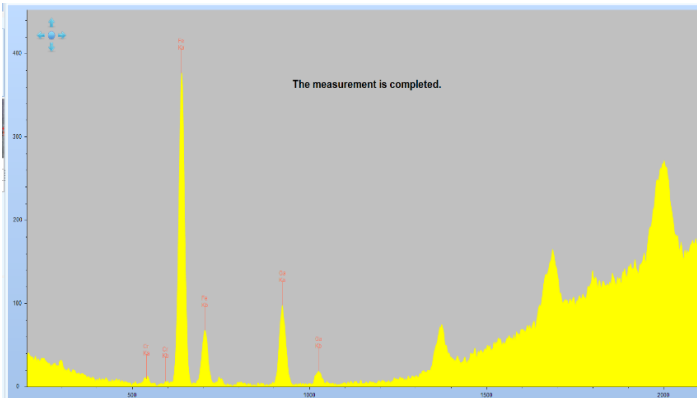
Bellerophon guarantee careful contract performance within the scope of analysis and its limits, according to state-of-the-art testing methods and geological science. In the occurrence of a warranty claim Bellerophon is not liable for damages incurred by client or third parties, be it direct, indirect, consequential or punitive, material or immaterial, based on contract, statute, tort or otherwise. Other warranties, expressed or implied, are expressly ousted.

IV. Nomenclature

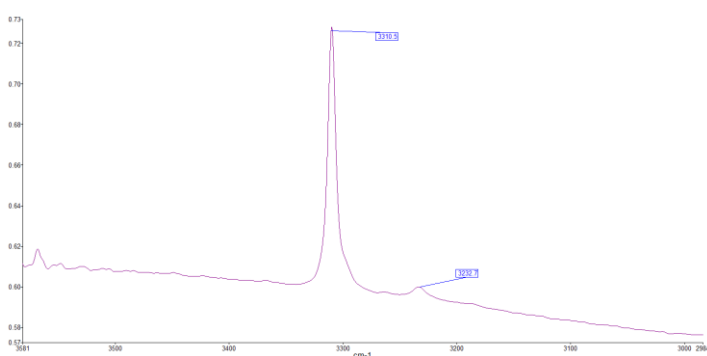
No indication of heat treatment: No present alterations of internal features and gemological propriety. H: heat treated. H1: Enhanced by heat with insignificant amount of residues present. H2: Enhanced by heat with minor amount of residues present. H3: Enhanced by heat with significant amount of residues present. H*pht: Enhanced by heat and pressure. H*diffusion: Enhanced by heat with diffusion of foreign material to enhance color. CE: Clarity enhancement by Oil. quantification following: none; insignificant; minor; standard or significant. CE*: Clarity enhancement by resin. For other comment go to our website

Gemological Properties

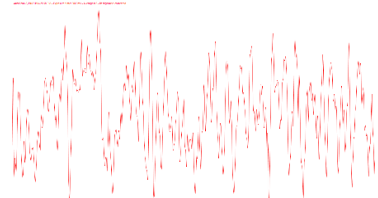
Energy-dispersive X-ray spectroscopy



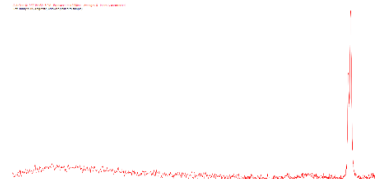
Fourier-transform infrared spectroscopy {A}



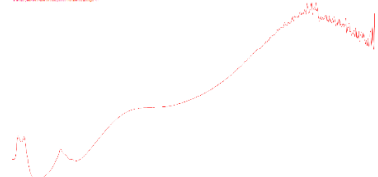
Raman spectroscopy



Photoluminescence



Ultraviolet-visible spectroscopy



Fourier-transform infrared spectroscopy (%T)

